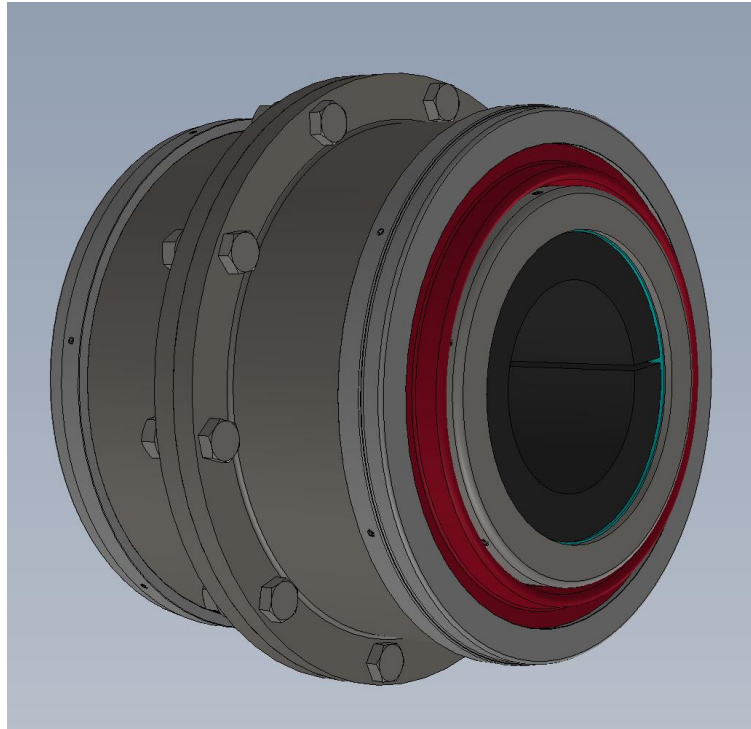




TCAE-ST SERIES



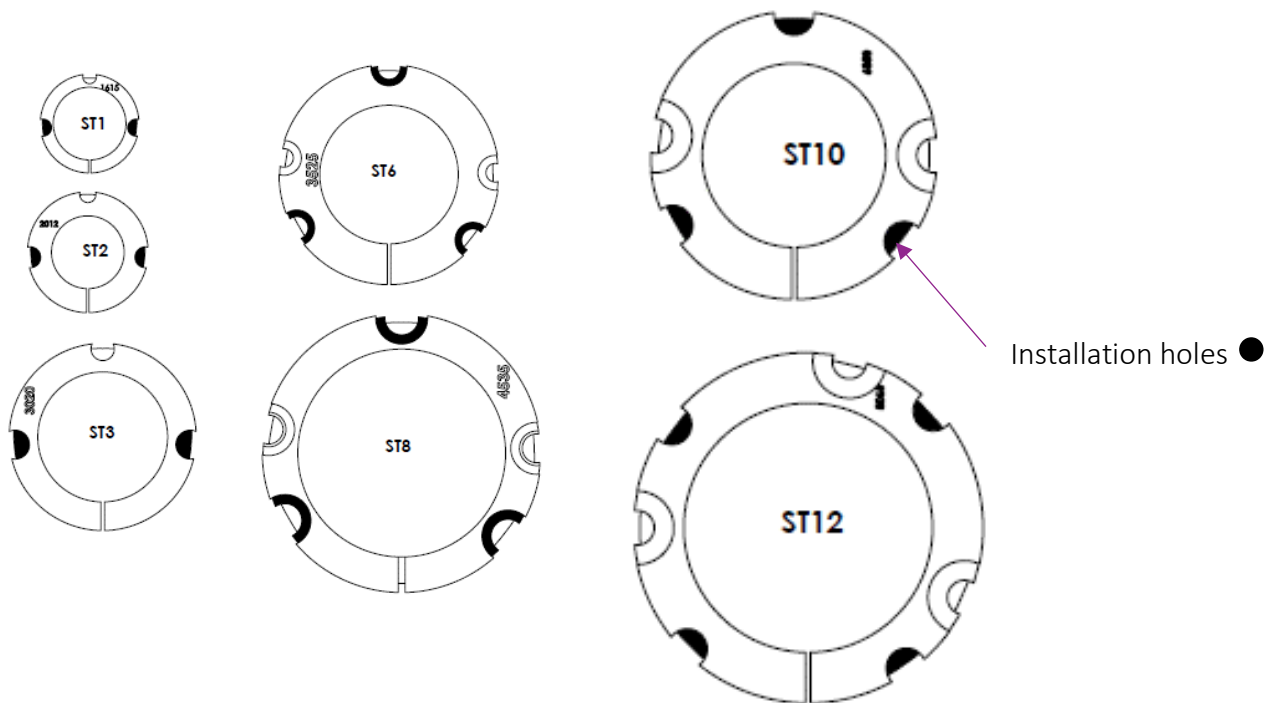
TCAE-ST SERIES		DBSE		Weight	Dia	DBSE	Bore D	Takes TaperLock Bush #	Maximum Shaft Size
	Max RPM	min	max	[kg]	[mm]	range	[mm]		[mm]
TCAE-ST-1	3600	12	24	6	152	(12 - 24)	42	1615	55
TCAE-ST-2	3600	12	26	8	180	(12 - 26)	50	2012	60
TCAE-ST-3	3600	12	30	12	225	(12 - 30)	75	3020	90
TCAE-ST-4	NOT AVAILABLE								
TCAE-ST-5	NOT AVAILABLE								
TCAE-ST-6	3000	14	32	24	260	(14 - 32)	100	3525	110
TCAE-ST-7									
TCAE-ST-8	2200	14	32	44	320	(14 - 32)	125	4535	130
TCAE-ST-9	NOT AVAILABLE								
TCAE-ST-10	1800	16	40	122	450	(16 - 40)	150	6050	200

TCAE-ST-11	1200	0	0	0	0		170	7060	210
TCAE-ST-12	1200	18	50	250	560	(18 - 50)	200	8065	240

TCAE-ST series

TAPERLOCK™ BUSH FITTING INSTRUCTIONS

This procedure details the method to install Taperlock bushes to the range of TCAE-ST series sizes ST-1 to ST-12.



The above illustration shows the various Taperlock bushes that fit with the associated TCAE-ST series coupling. The **DARK** coloured holes ● show the location to **INSERT** the screws to tighten.

The following table shows these bush types with the appropriate screw size and tightening torque:

COUPLING	TAPERLOCK BUSH	SCREW TYPE	TIGHTENING TORQUE Nm
TCAE-ST-1	1615	1/4" – 20 BSW OPSS	6
TCAE-ST-2	2012	7/16" -14 BSW OPSS	32
TCAE-ST-3	3020	5/8" – 11 BSW OPSS	90
TCAE-ST-6	3525	1/2" – 12 BSW SHCS	112
TCAE-ST-8	4535	3/4" – 10 BSW SHCS	275
TCAE-ST-10	6050	1-1/4" – 7 BSW Hex Bolt	800
TCAE-ST-12	8065	1-1/4" – 7 BSW Hex Bolt	800

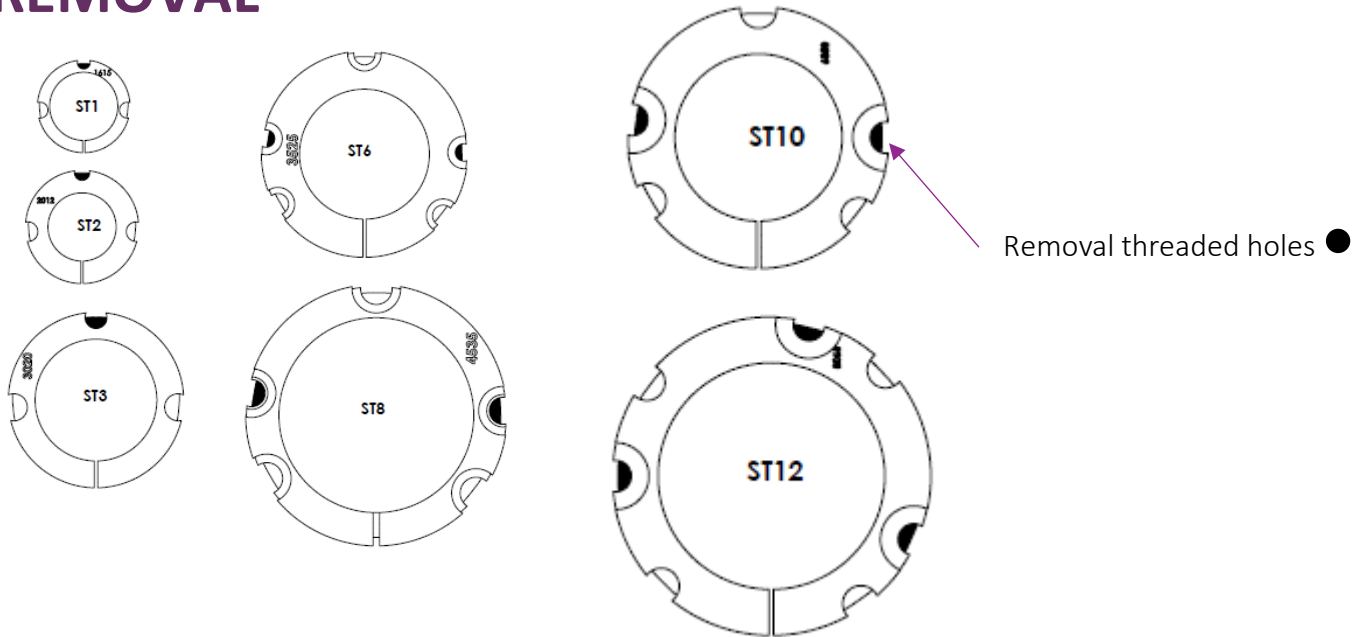
INSTALLATION

1. Clean all oil, dirt and paint from shafts and bushing bore etc
2. Insert the Taperlock bush into the ST coupling half.
3. Make sure to match the hole pattern of the bush with the ST coupling half. Each plain half hole of the bush mates with a corresponding threaded half hole of the ST coupling.
4. INSERT the appropriate set screw, cap screw or hex bolt into the half threaded holes of the ST coupling as indicated by ● on the above diagram.
5. Mount the coupling onto the shaft
6. Torque the screws to the corresponding tightening torque as shown in the table above.
7. On the larger sized bushes, ST-6 and above, use a block, sleeve or drift and hammer the large end of the bushing in place – **DO NOT HAMMER THE BUSH DIRECTLY**
8. Fill the removal holes with a plastic cap plug to prevent grease leaking from the coupling.

REMOVAL:

SEE NEXT PAGE

REMOVAL



1. Remove the plastic cap plugs
2. Remove all the threaded set screws holding the bush into the coupling
3. Insert the set screw, cap screw or hex bolt into the threaded holes indicated by ● on the above diagram.
4. Loosen the bush by alternately tightening the set screw, cap screw or hex bolt in these removal holes.

NOTES:

DO NOT USE ANTI SEIZE COMPOUNDS OR LUBRICANTS ON THE TAPERED SURFACES WHEN MOUNTING THE BUSH INTO THE COUPLING.