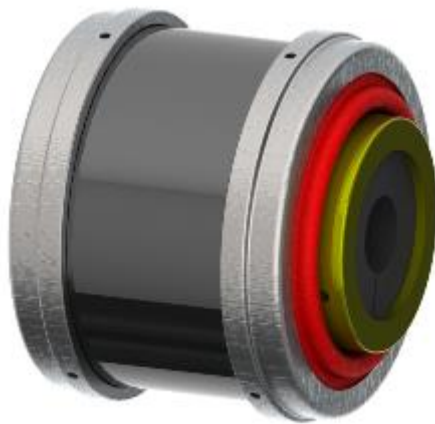


## INTRODUCING THE NEW TCAE-C & -CT SERIES COUPLING

In our ongoing efforts to enhance our product offerings, we are excited to introduce the latest additions to our constant velocity couplings lineup: the TCAE-C and TCAE-CT series.

### **TCAE-C and -CT series**

Designed to complement the performance of our existing TCAE coupling series, the TCAE-C and TCAE-CT series are engineered to excel in constrained spaces. The "C" or Compact series boasts unparalleled package density, featuring a remarkably small outer diameter relative to its impressive torque capacity. This means that in applications where space is at a premium, our new TCAE-C and TCAE-CT series products provide an optimal solution for coupling rotating shafts.



A standout feature of these innovative couplings is their smooth outer housing, eliminating the need for flange joints. This unified housing seamlessly transmits torque from one side to the other, while the inner sleeve units at each end can articulate independently at angles of up to 5 degrees. Additionally, the inner sleeves are capable of axial sliding within their designated range to accommodate expansion or contraction due to factors like vibration or thermal effects. The TCAE-C range offers a pilot-bored inner sleeve, easily customisable by end users for specific bore diameters, keyway sizes, or other bespoke installations. Conversely, the TCAE-CT range is equipped with a premachined Taperlock™ bore in the inner sleeve, simplifying the installation of standard Taperlock™ bushes for shaft connection.

Furthermore, the smooth outer housing boasts minimal rotating moment of inertia, rendering it ideal for critical applications such as servo drives and other high-speed, responsive scenarios. While the C series is not suitable for underwater operation, this innovative coupling is also specifically engineered to function effortlessly even when completely submerged in hydraulic oil.

We welcome you to explore the comprehensive range of possibilities with Thompson Couplings and discover the difference our engineering expertise and reliable couplings can make in your projects. You can reach out to your distributor or directly to Thompson Couplings, and we will promptly provide information on the nearest distributor to your location. At Thompson Couplings, we are prepared to go that extra mile and engage with you to understand your specific needs and assist in maximising both cost and time efficiencies while enhancing your production capabilities.