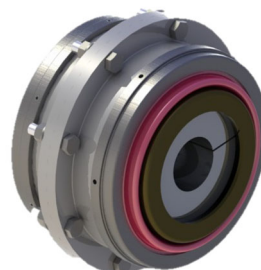


TCAE-ST SERIES: SPECIFICATIONS							
PARAMETERS	UNIT	TCAE- ST -1	TCAE- ST -2	TCAE- ST -3	FOR THE TCAE-ST-4 & TCAE-ET-5 CHECK WITH THOMPSON COUPLINGS OR DISTRIBUTOR	TCAE- ST -6	FOR THE TCAE-ST-7
CONTINUOUS TORQUE, T_{100}	N.m	408	826	1,443		3,823	CHECK WITH THOMPSON COUPLINGS OR DISTRIBUTOR
NOMINAL POWER CAP AT: (Based on machine service factor of 1.25 service life of 7,200 Hours)	1000 RPM	kW***	12	30		166	
	1500 RPM	kW***	17	42		230	
	MAX RPM	kW***	3,600 rpm 30kW	3,600 rpm 30kW		3,000 rpm 30kW	
MAXIMUM MISALIGNMENT ANGLE	DEGREE °	10	10	10		10	
MAXIMUM PARALLEL SHAFT OFFSET	mm	DEPENDANT ON CUSTOMER LENGTH					
MAXIMUM SERVICE TEMPERATURE	°C	120	120	120		120	
SERVICE LIFE		AS PER CUSTOMER APPLICATION					
DEMENSION ØA	mm	152	180	225		260	
DEMENSION L (DBSE)	mm	12 - 24	12 - 26	12 - 30		14 - 32	
BORE SIZE	mm	42	50	75		100	

ST Series



PARAMETERS	UNIT	TCAE- ST -8	FOR THE TCAE-ST-9 CHECK WITH THOMPSON COUPLINGS OR DISTRIBUTOR	TCAE- ST -10	FOR THE TCAE-ST-11	TCAE- ST -12	FOR THE TCAE-ST-13	FOR THE TCAE-ST-14
CONTINUOUS TORQUE, T_{100}	N.m	7,741		18,115	CHECK WITH THOMPSON COUPLINGS OR DISTRIBUTOR	35,598	CHECK WITH THOMPSON COUPLINGS OR DISTRIBUTOR	CHECK WITH THOMPSON COUPLINGS OR DISTRIBUTOR
NOMINAL POWER CAP AT: (Based on machine service factor of 1.25 service life of 7,200 Hours)	1000 RPM	kW***		591		1,161		
	1500 RPM	kW***						
	MAX RPM	kW***		1,800 730kW		1,200 rpm 1,254 kW		
MAXIMUM MISALIGNMENT ANGLE	DEGREE °	10		10		10		
MAXIMUM PARALLEL SHAFT OFFSET	mm	DEPENDANT ON CUSTOMER LENGTH						
MAXIMUM SERVICE TEMPERATURE	°C	120		120		560		
SERVICE LIFE		AS PER CUSTOMER APPLICATION						
DEMENSION ØA	mm	320		450		560		
DEMENSION L (DBSE)	mm	14 - 32		16 - 40		18 - 50		
BORE SIZE	mm	110		150		150		

Thompson Coupling Alignment Eliminator (TCAE-ST-1) Technical Specifications and Details

Continuous Torque, $T_{100}^{(4)}$	408 Nm
Max. Misalignment Angle	+/- 5°
Max. Parallel Shaft Offset	Dependent on shaft length
L₁₀ bearing life ⁽²⁾	Contact us for your specific application
Max. Service Temperature	Up to 120 °C continuous
Connection Details	Keyed shaft via taper lock bush #1615. Shaft size range 16mm - 65mm (0.625" - 2.5")
Max Swing Diameter	152 mm
DBSE	12 mm – 24mm
Weight	5.8 kg

⁽¹⁾ Nominal power capacity shown for different speeds is based on a coupling with a machine service factor of 1.25 operating at 1-degree misaligned angle and operating at 8 hours per day, 25 days per month for 3 years to give a service life of 7,200 hours.

⁽²⁾ Actual bearing life depends upon a combination of factors. These include equivalent speed, torque and articulated angle. Additionally, shock loads, and environmental conditions may also affect life ratings.

⁽³⁾ Maximum power cap. subject to shaft length.

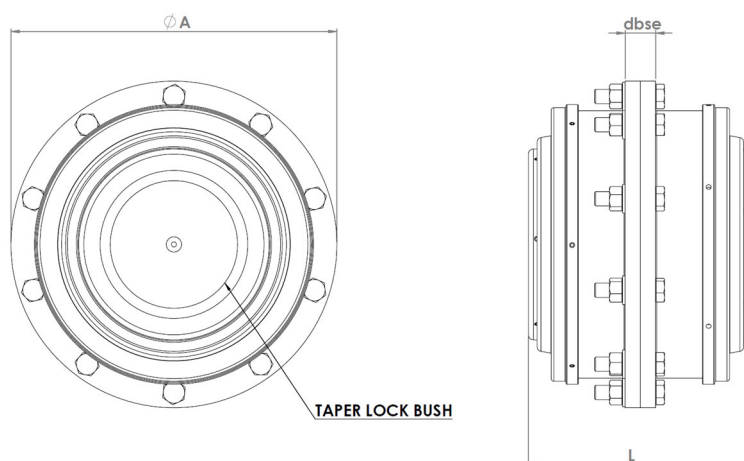
⁽⁴⁾ Continuous Torque, T_{100} is defined as the unfactored torque value when run for 8 hours per day and 25 days per month at 100 rpm with a 0° coupling angle and machine service factor of 1 will give 3 years continuous service life.

Notes:

I. The Coupling can be laser aligned when initially installed but as it can handle axial, or parallel, or angular, or combination of any of these in misalignment, it does not need aligning after installation.

II. The coupling does not need maintenance or lubrication once installed.

TCAE-ST Series



Dimensions and specifications subject to change without notice – Rev 5 Amended January 2024

Thompson Coupling Alignment Eliminator (TCAE-ST-2) Technical Specifications and Details

Continuous Torque, $T_{100}^{(4)}$	826 Nm
Max. Misalignment Angle	+/- 5°
Max. Parallel Shaft Offset	Dependent on shaft length
L₁₀ bearing life ⁽²⁾	Contact us for your specific application
Max. Service Temperature	Up to 120 °C continuous
Connection Details	Keyed shaft via taper lock bush #2012. Shaft size range 16mm - 65mm (0.625" - 2.5")
Max Swing Diameter	180 mm
Overall Length	110 mm
Weight	9.5 kg

(1) Nominal power capacity shown for different speeds is based on a coupling with a machine service factor of 1.25 operating at 1-degree misaligned angle and operating at 8 hours per day, 25 days per month for 3 years to give a service life of 7,200 hours.

(2) Actual bearing life depends upon a combination of factors. These include equivalent speed, torque and articulated angle. Additionally, shock loads, and environmental conditions may also affect life ratings.

(3) Maximum power cap. subject to shaft length.

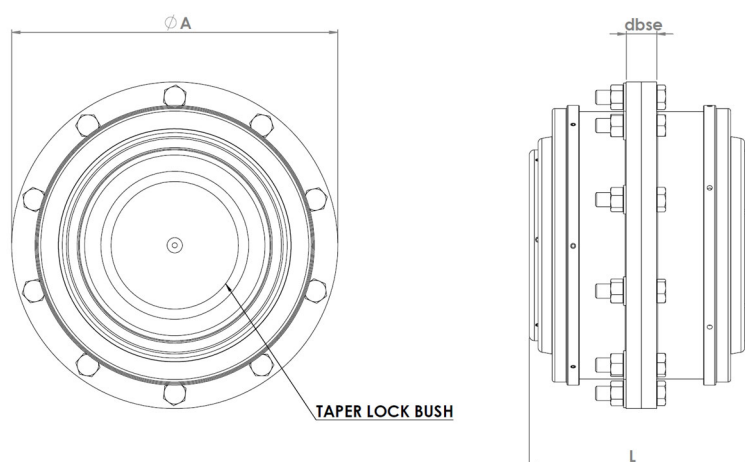
(4) Continuous Torque, T_{100} is defined as the unfactored torque value when run for 8 hours per day and 25 days per month at 100 rpm with a 0° coupling angle and machine service factor of 1 will give 3 years continuous service life.

Notes:

I. The Coupling can be laser aligned when initially installed but as it can handle axial, or parallel, or angular, or combination of any of these in misalignment, it does not need aligning after installation.

II. The coupling does not need maintenance or lubrication once installed.

TCAE-ST Series



Dimensions and specifications subject to change without notice – Rev 5 Amended January 2024

Thompson Coupling Alignment Eliminator (TCAE-ST-3) Technical Specifications and Details

Continuous Torque, $T_{100}^{(4)}$	1,443 Nm
Max. Misalignment Angle	+/- 5°
Max. Parallel Shaft Offset	+/- 7 mm
L₁₀ bearing life ⁽²⁾	Contact us for your specific application
Max. Service Temperature	Up to 120 °C continuous
Connection Details	Keyed shaft via taper lock bush #3020
Max Swing Diameter	225 mm
Overall Length	125 mm
Weight	16 kg

(1) Nominal power capacity shown for different speeds is based on a coupling with a machine service factor of 1.25 operating at 1-degree misaligned angle and operating at 8 hours per day, 25 days per month for 3 years to give a service life of 7,200 hours.

(2) Actual bearing life depends upon a combination of factors. These include equivalent speed, torque and articulated angle. Additionally, shock loads, and environmental conditions may also affect life ratings.

(3) Maximum rated speed.

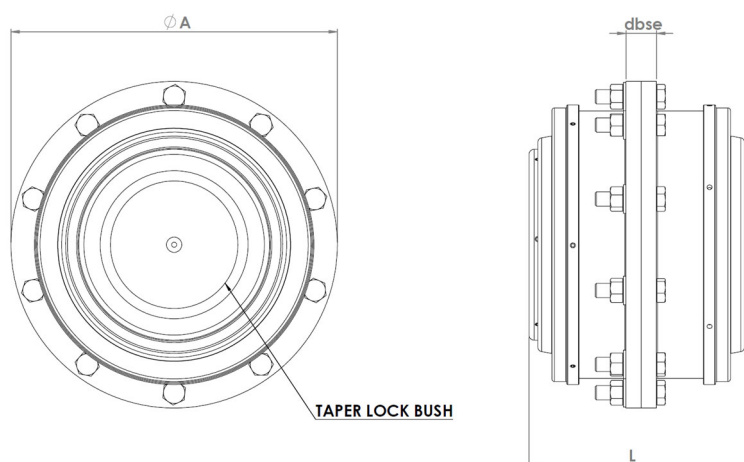
(4) Continuous Torque, T_{100} is defined as the unfactored torque value when run for 8 hours per day and 25 days per month at 100 rpm with a 0° coupling angle and machine service factor of 1 will give 3 years continuous service life.

Notes:

I. The Coupling can be laser aligned when initially installed but as it can handle axial, or parallel, or angular, or combination of any of these in misalignment, it does not need aligning after installation.

II. The coupling does not need maintenance or lubrication once installed.

TCAE-ST Series



Dimensions and specifications subject to change without notice – Rev 5 Amended January 2024

Thompson Coupling Alignment Eliminator (TCAE-ST-6) Technical Specifications and Details

Continuous Torque, $T_{100}^{(5)}$	3,823 Nm
Max. Misalignment Angle	+/- 5°
Max. Parallel Shaft Offset	Dependent on shaft length
L₁₀ bearing life ⁽²⁾	Contact us for your specific application
Max. Service Temperature	Up to 120 °C continuous
Connection Details	Keyed shaft via taper lock bush #3525.
Max Swing Diameter	260 mm
Overall Length	140 mm
Weight	32 kg

(1) Nominal power capacity shown for different speeds is based on a coupling with a machine service factor of 1.25 operating at 1-degree misaligned angle and operating at 8 hours per day, 25 days per month for 3 years to give a service life of 7,200 hours.

(2) Actual bearing life depends upon a combination of factors. These include equivalent speed, torque and articulated angle. Additionally, shock loads, and environmental conditions may also affect life ratings.

(3) Maximum rated speed.

(4) Maximum power cap. subject to shaft length.

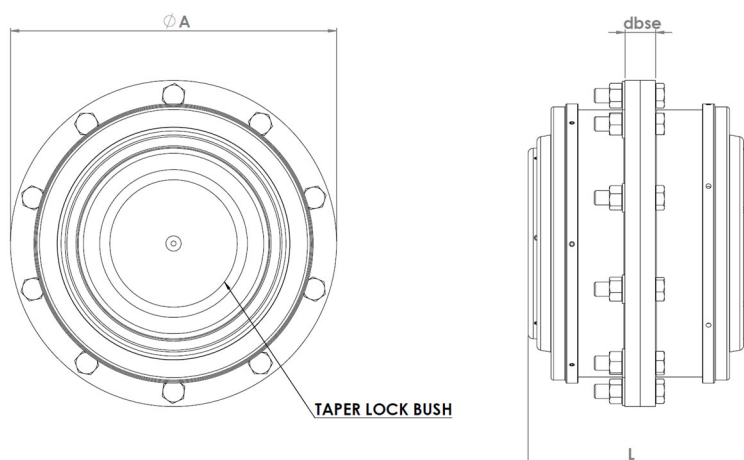
(5) Continuous Torque, T_{100} is defined as the unfactored torque value when run for 8 hours per day and 25 days per month at 100 rpm with a 0° coupling angle and machine service factor of 1 will give 3 years continuous service life.

Notes:

I. The Coupling can be laser aligned when initially installed but as it can handle axial, or parallel, or angular, or combination of any of these in misalignment, it does not need aligning after installation.

II. The coupling does not need maintenance or lubrication once installed.

TCAE-ST Series



Dimensions and specifications subject to change without notice – Rev 5 Amended January 2024

Thompson Coupling Alignment Eliminator (TCAE-ST-8) Technical Specifications and Details

Continuous Torque, $T_{100}^{(4)}$	7,741 Nm
Max. Misalignment Angle	+/- 5°
Max. Parallel Shaft Offset	+/- 9 mm
L₁₀ bearing life ⁽²⁾	Contact us for your specific application
Max. Service Temperature	Up to 120 °C continuous
Connection Details	Keyed shaft via taper lock bush #4535
Max Swing Diameter	320 mm mm
Distance between Shaft Ends	245 mm Min. 2000 mm Max.
Weight	53 kg

⁽¹⁾ Nominal power capacity shown for different speeds is based on a coupling with a machine service factor of 1.25 operating at 1-degree misaligned angle and operating at 8 hours per day, 25 days per month for 3 years to give a service life of 7,200 hours.

⁽²⁾ Actual bearing life depends upon a combination of factors. These include equivalent speed, torque and articulated angle. Additionally, shock loads, and environmental conditions may also affect life ratings.

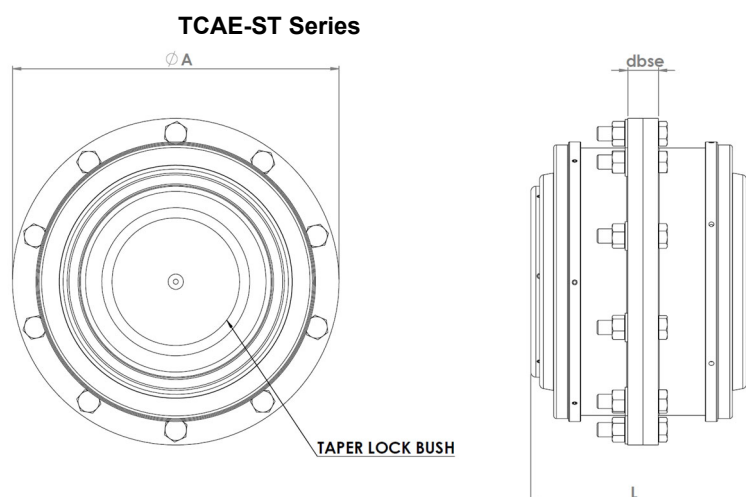
⁽³⁾ Maximum rated speed.

⁽⁴⁾ Continuous Torque, T_{100} is defined as the unfactored torque value when run for 8 hours per day and 25 days per month at 100 rpm with a 0° coupling angle and machine service factor of 1 will give 3 years continuous service life.

Notes:

I. The Coupling can be laser aligned when initially installed but as it can handle axial, or parallel, or angular, or combination of any of these in misalignment, it does not need aligning after installation.

II. The coupling does not need maintenance or lubrication once installed.



Dimensions and specifications subject to change without notice – Rev 5 Amended January 2024

Thompson Coupling Alignment Eliminator (TCAE-ST-10) Technical Specifications and Details

Continuous Torque, $T_{100}^{(4)}$	18,115 Nm
Max. Misalignment Angle	+/- 5°
Max. Parallel Shaft Offset	+/- 7 mm
L₁₀ bearing life ⁽²⁾	Contact us for your specific application
Max. Service Temperature	Up to 120 °C continuous
Connection Details	Keyed shaft via taper lock bush #6050
Max Swing Diameter	450 mm
Distance between Shaft Ends	320 mm Min. 2000 mm Max
Overall Length	423 mm
Weight	167 kg Length of Shaft

⁽¹⁾ Nominal power capacity shown for different speeds is based on a coupling with a machine service factor of 1.25 operating at 1-degree misaligned angle and operating at 8 hours per day, 25 days per month for 3 years to give a service life of 7,200 hours

⁽²⁾ Actual bearing life depends upon a combination of factors. These include equivalent speed, torque and articulated angle. Additionally, shock loads, and environmental conditions may also affect life ratings.

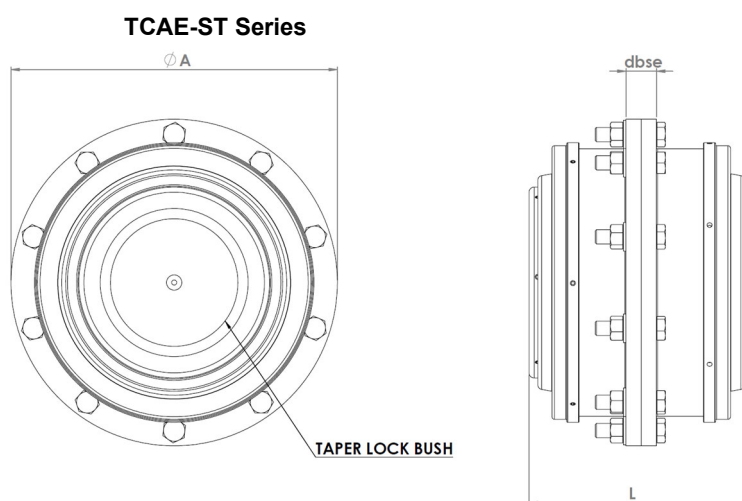
⁽³⁾ Maximum rated speed.

⁽⁴⁾ Continuous Torque, T_{100} is defined as the unfactored torque value when run for 8 hours per day and 25 days per month at 100 rpm with a 0° coupling angle and machine service factor of 1 will give 3 years continuous service life.

Notes:

I. The Coupling can be laser aligned when initially installed but as it can handle axial, or parallel, or angular, or combination of any of these in misalignment, it does not need aligning after installation.

II. The coupling does not need maintenance or lubrication once installed.



Dimensions and specifications subject to change without notice – Rev 5 Amended January 2024

Thompson Coupling Alignment Eliminator (TCAE-ST-12) Technical Specifications and Details

Continuous Torque, $T_{100}^{(4)}$	35,598 Nm
Max. Misalignment Angle	+/- 5°
Max. Parallel Shaft Offset	+/- 7 mm
L₁₀ bearing life ⁽²⁾	Contact us for your specific application
Max. Service Temperature	Up to 120 °C continuous
Connection Details	Keyed shaft via taper lock bush #6050
Max Swing Diameter	560 mm
Distance between Shaft Ends	18 mm - 50mm
Overall Length	348 mm
Weight	304 kg

⁽¹⁾ Nominal power capacity shown for different speeds is based on a coupling with a machine service factor of 1.25 operating at 1-degree misaligned angle and operating at 8 hours per day, 25 days per month for 3 years to give a service life of 7,200 hours

⁽²⁾ Actual bearing life depends upon a combination of factors. These include equivalent speed, torque and articulated angle. Additionally, shock loads, and environmental conditions may also affect life ratings.

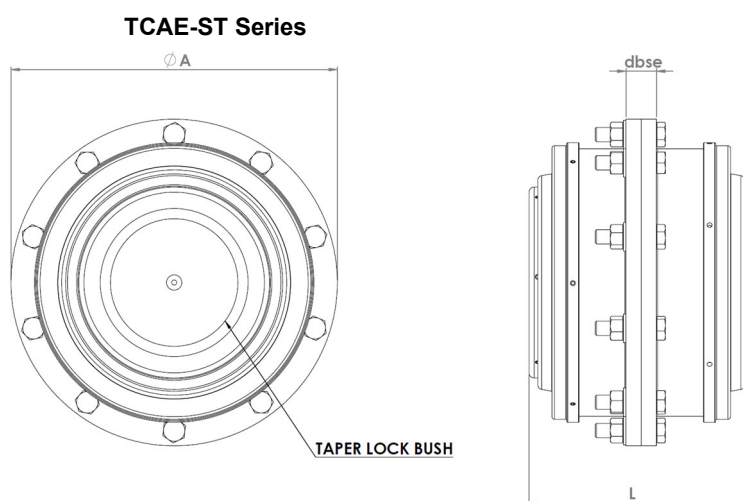
⁽³⁾ Maximum rated speed.

⁽⁴⁾ Continuous Torque, T_{100} is defined as the unfactored torque value when run for 8 hours per day and 25 days per month at 100 rpm with a 0° coupling angle and machine service factor of 1 will give 3 years continuous service life.

Notes:

I. The Coupling can be laser aligned when initially installed but as it can handle axial, or parallel, or angular, or combination of any of these in misalignment, it does not need aligning after installation.

II. The coupling does not need maintenance or lubrication once installed.



Dimensions and specifications subject to change without notice – Rev 5 Amended January 2024