

BELOW OPPOSITION COUPLING WAS REPLACED BY THE THOMPSON COUPLING TCAE-4-R SUCCESSFULLY. THIS DEMONSTRATES THE DAMAGE AXIAL MOVEMENT OF STEAM TURBINE CAUSES BUT WHICH THE TCAE RANGE MINIMISES/ELIMINATES.

Machinery Investigation September 2017 – Coupling Failure

- **September 2017 failure**

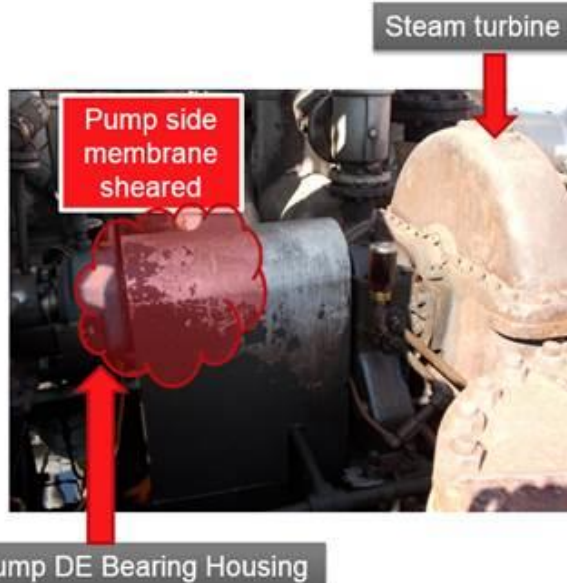
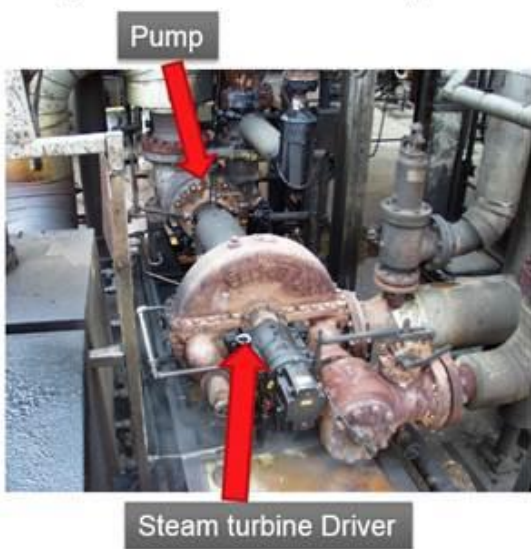


petroineos
REFINING AND TRADING

Machinery Investigation September 2017 – Coupling Failure

- **Failure Mode**

- The coupling failed at the Pump Drive end membrane – coupling failures of this nature are typically attributed to misalignment between driver and driven equipment



petroineos
REFINING AND TRADING